

# Zeutschel ScanStudio

The best of both worlds



**Z** **ZEUTSCHEL**  
WE DIGITIZE YOUR WORLD

# Scanner and photo studio in one

## All kind of originals – highest requirements – one system

**The Zeutschel ScanStudio combines the best of two worlds:** the world of studio photography with the world of professional scanners.

The result is a digitization system that not only redefines flexibility and future-proof design, it meets the highest demands of image quality, has a productive operation with reliable results and is also easy-to-use.

The Zeutschel ScanStudio comprises a camera system with digital back, a precision shutter (MTBF > 3 million), interchangeable lenses and the ErgoLED lighting system with flexible directed lighting. All system components are embedded in a solid, modular base unit.

### New standards of flexibility

Designed as a completely modular system, Zeutschel ScanStudio offers the user unprecedented levels of flexibility. The system can be expanded or upgraded at any time as requirements grow or new tasks are added. Showcasing interchangeable lenses and replaceable and upgradeable digital back cameras up to 150 MP resolution, the system concept also features a variety of copyboard systems. This includes transparency units, holders for the most common film formats, book cradles and copyboard tables for documents up to A1 size.

### Richly detailed, color-true and high contrast images

The Zeutschel ScanStudio offers an image quality exceeding the provisions of the established digitization guidelines of FADGI, Metamorfoze and the ISO 19264-1 standard.

This system solution uses the latest state-of-the-art generation of digital back cameras from PhaseOne. The results are sharp, noise-free and high contrast images that faithfully reproduce even the finest details.

Each perfect picture requires the right lighting. Instead of a flash, the Zeutschel ScanStudio uses the special Zeutschel ErgoLED ergonomic lighting system with two flexible, adjustable LED lamps. This ensures glare-free, directed lighting and economic operation.

### Reliable results, user-friendly, highest productivity

The Zeutschel ScanStudio is controlled using the OmniScan software, a proven tool for implementing efficient digitization workflows in archives and libraries.

In the software, predefined workflows can be created containing all the major settings for the respective task. The Zeutschel ScanStudio has achieved the markets' fastest shutter speeds and scanning cycles for high-resolution digital camera capture.

Modular Zeutschel ScanStudio – the all-in-one system for your digitization projects



ErgoLED lighting system, flexible adjustable

Zeutschel ScanStudio camera with interchangeable digital back and interchangeable lenses



Ergonomic operation and automatic function for highest standards of quality and maximum productivity



**Compliant to**  
ISO 19264-1 Level A  
FADGI 4 Star  
Metamorfoze Full

# Zeutschel ScanStudio



Extensive, interchangeable copyboard systems

## Product advantages

- Modular, universal system for all digitization tasks
- Interchangeable digital back cameras and lenses
- Copyboard systems for a wide range of documents
- Highest productivity – short scanning cycles
- Reliable results through predefined workflows
- Automatic functions – auto-focus, automatic exposure control, color profiles and automatic scanning
- Zeuschel ErgoLED lighting system for shadow- and reflection-free results
- Software for book curve correction for optimized image results

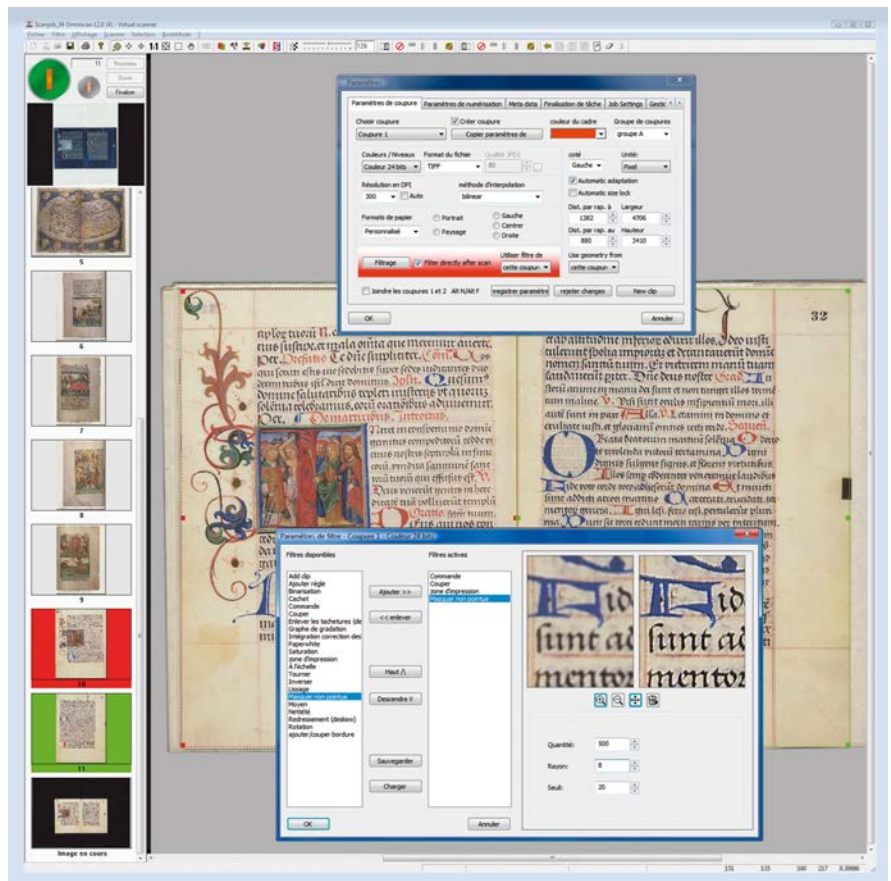
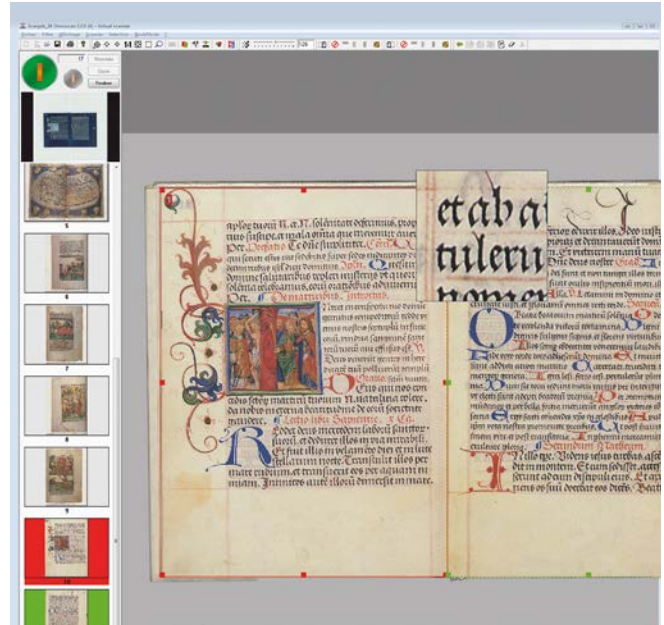
## Copyboard systems

Roll-in/roll-out interchangeable A1 copy board systems

- **Book cradle OT 180 H 35 XL** with self-opening glass plate with adjustable opening angle for max. bookthickness of 350 mm
- **Book cradle OT 180 H 50 XL** with self-opening glass plate with adjustable opening angle and changeable book plates for max. bookthickness of 500 mm
- **Book cradle OT 90** for old and valuable books with a max. book thickness of 240 mm
- **Top light table AT1** for opaque originals (e.g. technical drawings, geographic maps); max. format of original, opened: 1070 × 675 mm
- **Vacuum table** with adjustable vacuum zone up to A2+
- **Toplight table** with working area up to A2. Adjustable illumination strength, adjustable light spectrum
- **Film carrier** for film formats 35 mm up to 8 × 10"
- **Glass negative carrier** with four-way masking
- **Top light table A0** with and without glass plate for formats >A0

## Software OS 12 for ScanStudio

- Scan software and post-processing software in one
- Wide range of filters and capturing tools
- Express mode for recurrent jobs
- Job-based operation mode / jobmode
- 48 bit / 16 bit grayscale
- Multi-threading for most efficient working
- Saving in all formats at the same time, also raw image
- Metadata implementation
- Graduation curve adjustment
- Possible implementation of quality management tools
- Software for book curve correction for optimized image results



## Options and Accessories



Backlight Unit A2



Kit 90° for A1 Bookcradle



ScanStudio with A2 bookcradle



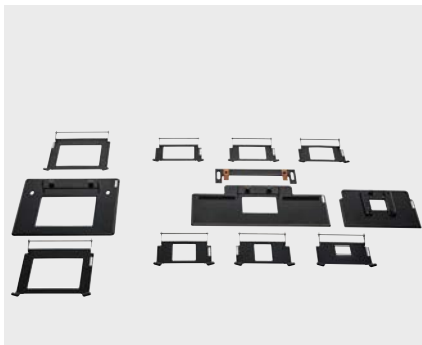
Backlight Table with film carrier for filmstrips



Kit 140° – 90° for A1 Bookcradle



Kit 90° for format DIN A2



Various holders for micro films



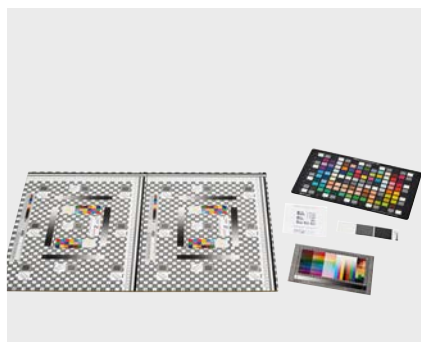
Control Panel



Kit 140° – 90° for A2 Bookcradle



Holder for glass plates, continuously adjustable



OS QM Tool and test targets



Photo table with glass plate and soft pad for very careful handling

Technical data	ScanStudio A2	ScanStudio A1	ScanStudio A0
<b>Sensor</b>			
Sensors	100 / 150 MP		
Technology	CMOS		
Sensor format	medium format (4,5 × 6 cm)		
Data depth	16 bit		
Dyn range in f-stops	12		15
Dyn range in opt density	4,5		
Max opt. resolution	100 MP up to 9000 dpi 150 MP up to 10000 dpi		
<b>Camera Type</b>			
Camera Type	Zeutschel ScanStudio Camera		
Shutter	rotary shutter MTBF > 3 Mio.		
Shutter speed	1/50 sec–∞		
Lens range	60–240 mm 70 mm for format A2–A1 100 mm for format A7–A2 Macro lens 120 mm for format 24 × 36 mm–4 × 5" at 100 MP and 150 MP		60 – 240 mm 70 mm for format A2–A0 100 mm for format A7–A2 Macro lens 120 mm for format 24 × 36 mm–4 × 5"
Lens detection	optical, automatic		
<b>Reprostand</b>			
Dimensions (Height × Depth × Width)	2400 mm × 800 mm × 1200 mm		2400 mm × 1035 mm × 1200 mm
Working height	700–900 mm pre-adjustable		800 mm with AT0 800/350 with glass plate 800/350 mm
Autofocus	yes		
Environmental light control	glare and stray light control		
<b>Illumination</b>			
LED	full spectral LED		
Illuminance	adjustable 500 – 4500 lx		
ErgoLED	ergonomic design, non dazzling, soft dimm automatic		
<b>Performance</b>			
Scanning time	50 ms (typical)		
Cycle time	3,4 – 6 sec, (100 MP), 7-9 sec (150 MP), typical values		
<b>Standards</b>			
ISO 19264	Quality level > A		
FADGI	Quality level > 4 Star (bis A2); Quality level > 3 Star (A1; A0)		
Metamorfoze	Quality level > Metamorfoze Full		
<b>Electrical &amp; Conformities</b>			
Primary power	110–240 V 50/60 Hz 480 VA		
Electrical safety	60950-3; IEC 62368-1:2014		
EMC	EN 55022; EN 55024; EN 61000-3-2; EN 61000-3-3 US, CAN: FCC, Part 15 class B, ICES-003 Class B		
Lamp system	compliant to EN 62471 „Photobiological safety of lamps and lamp systems“		
<b>Software</b>			
Operating system	Windows 10 (64 bit)		
Software	min. OmniScan OS 12.12 (64 bit)		
Color management	according to ICC Standard		
Book curve correction	optional		

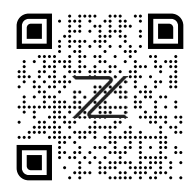
Technical changes reserved



**Zeutschel GmbH** | Heerweg 2 | 72070 Tübingen | Germany

T +49 7071 9706-0 | F +49 7071 9706-44 | info@zeutschel.de | www.zeutschel.com

More information:



www.zeutschel.com